

Pro Components

CSJ-S SERIES PC MOUNTED PREFORM JUMPERS

SPECIFICATIONS

Material: #C110 Copper Flat Wire

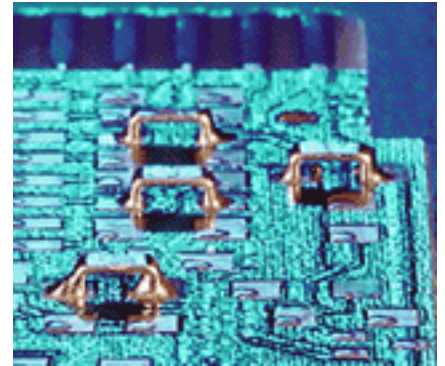
Finish: RoHS Compliant, 100 μ " Matte Tin over Nickel Barrier

Reel Size: 182mm x 12mm(7" x 0.472").

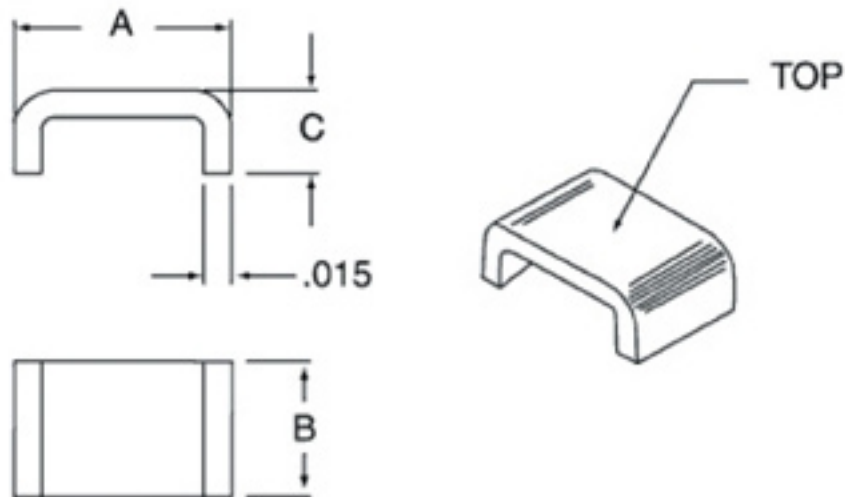
Quantity per Reel: 100pcs.

Taping Specification: EIA-481

Maximum Current: 2 Amps.



DIMENSIONS:(UNITS: INCHES)



| Part Number | "A" | "B" | "C" |
|-------------|-----------------|-----------------|-----------------|
| CSJ-S0805 | 2.032mm(0.080") | 1.270mm(0.050") | 1.270mm(0.050") |
| CSJ-S1206 | 3.048mm(0.120") | 1.575mm(0.062") | 1.270mm(0.050") |